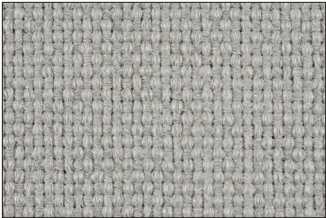
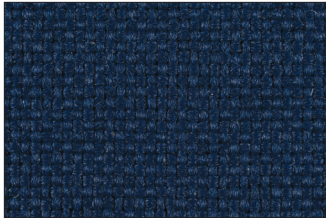


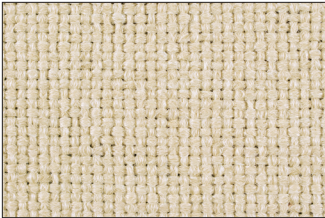
# STANDARD FABRIC COLLECTION



**Granite**  
36



**Indigo**  
35



**Nutmeg**  
33



**MOORECO**<sup>TM</sup>

MooreCo Inc.  
2885 Lorraine Avenue | Temple, TX 76501  
p: 800.749.2258 | f: 866.888.7483  
[www.moorecoinc.com](http://www.moorecoinc.com)

# STANDARD FABRIC TECHNICAL INFORMATION

---

Fabric is tested by an independent laboratory against standards for upholstery fabrics set by the National Association of Furniture Manufacturers. Fabric consists of 100% woven polypropylene.

Tests were conducted in accordance with the provisions of ASTM designation E84-70. Tests are identical to those specified in ANSI 2.5, UL 723, and UBC 42-1.

Vacuuming or light brushing is recommended to prevent dust and soil build-up.

Custom fabrics can be applied to MooreCo boards if fabric is supplied. Call for details and upcharge information. Subject to approval.

<b>Physical Properties</b>	<b>Units</b>
Light Fastness	Exceeds 80 hours
Tear Strength	25.2 lbs minimum warp; 24.8 lbs minimum filling
Breaking Strength	100 lbs minimum warp and filling
Abrasion	15,000 double rubs
Flame Retardancy	Flame spread rate of 5 Smoke density factor of 10 Class A standard for wall covering

